

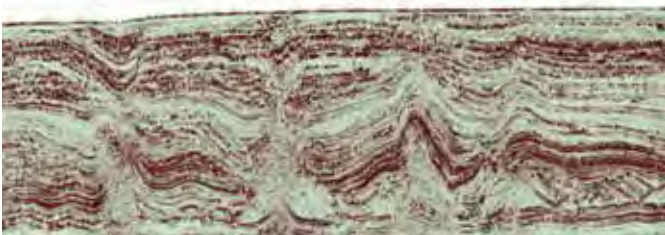
Petroleum Geoscience MSc

Petroleum Geoscience MSc

The degree combines postgraduate MSc training, industry professional development programmes and internationally renowned research within one of the UK's leading Earth Science Schools. A number of graduates from the course choose to continue their studies by progressing onto a PhD.

World-Class Infrastructure

The School has world-class research and teaching facilities, including geochemical, sedimentological, petrophysical and geophysical laboratories. The Petroleum Geoscience Centre runs three workstation laboratories: two are dedicated research environments using clusters of Unix workstations, and Linux/Windows PCs running the Schlumberger GeoFrame suite, Paradigm VoxGeo, Petrel, Kingdom Suite, GoCad, ER Mapper and Arc-Info, plus various well-log analysis packages. The third is a dedicated new teaching facility comprising a 30-seat workstation suite. Immersive visualization for research and training is provided within the School.



Programme structure

The programme has strong links with international oil companies and a proven track record for training in exploration and production geoscience to meet the needs of the oil industry. The teaching team is led by Jonathan Redfern - Chair of Petroleum Geoscience, who has many years experience with international oil companies, and includes leading researchers and experienced petroleum geoscientists. There is a strong industrial component with several course units taught by industry specialists and there is potential to undertake research projects linked to oil companies.

Course units offered include:

- Geophysical Imaging and Interpretation
- Petroleum Economics and Risk Analysis
- Basin Studies and Modelling
- Petroleum Geochemistry
- Petrophysics/Formation Evaluation
- Prospect Evaluation and Petroleum Economics
- Reservoir Characterisation and Modelling
- 3D Seismic Interpretation and Visualisation
- Wellsite and Operations Geology
- Management and Communication Skills

The programme combines academic excellence with industrial application. From October to April taught programmes comprise of lectures, practical exercises, tutorials and group projects. From May to September you specialise whilst undertaking an independent research project often carried out within the offices of a sponsoring oil company, providing valuable work experience. Fieldwork is also an important part of the course. Three field trips are taken within the UK and one trip overseas each year.

Contact

Mr M Atherton
School of Earth, Atmospheric
& Environmental Sciences
The University of Manchester
Oxford Road
Manchester
M13 9PL

tel +44 (0)161 275 0776
fax +44 (0)161 306 9361
email michael.atherton@manchester.ac.uk

Visit our website at
www.manchester.ac.uk/seaes



Career opportunities

Graduates from this programme typically follow career paths in the petroleum sector; with major international oil companies, service companies, the growing number of consultancies, government institutions, or the financial sector. Others continue their studies with PhD training.

Entry requirements

A good Honours degree in Geology, Geophysics, Petroleum Engineering or related discipline. Work experience may also be taken into account. Overseas students need to demonstrate competence in English language (minimum IELTS score of 6.5).



Scholarships

Funding for places on the MSc are available from NERC, oil company scholarships and University bursaries. NERC provide three fully funded scholarships annually (full tuition and living expenses) for UK students on the Petroleum Geoscience course. These are awarded on a competitive basis, following interviews in February. Industry scholarships, ranging from £5,000 up to £15,000, are advertised annually. This year BP have announced a major sponsorship programme for the University of Manchester, which will include places on the Petroleum Geoscience MSc. All eligible applicants will be advised of these scholarships on application. For international students, there are other specific oil company scholarships available, and government schemes (such as PTFD Nigeria).

