

## Why choose this course?

- The PG Cert is an intensive 12-week course across the summer which combines academic and practical teaching to prepare you for a career in the fast paced petroleum industry
- Our tutors bring high academic quality as well as real world experience
- You will receive advice from careers guidance experts on CV preparation and interview techniques which mock interviews involving the industry will help you apply for jobs
- Our external tutors are active members of the oil industry giving a real insight and providing strong links to help your career.

## Quotes about the course

"I can't think of another course that is so well tailored to preparing a geologist to start working."

**Dr Rod Sloan, Manager of Geosciences, C&C Reservoirs**

"I had a background in structural geology but not the petroleum industry. The course at Derby strengthened my knowledge of petroleum systems and exploration techniques, leading me to my current position as structural petroleum geologist at GETECH in Leeds."

**Dorothea Eue, PG Cert 2006**



UNIVERSITY  
of DERBY

PETROLEUM GEOSCIENCE

# PG Cert/Dip/MSc Applied Petroleum Geoscience



## About the course

The high degree of industry involvement means you will get the benefit of the latest thinking and technique in the areas of petroleum geology, petroleum techniques and geological and commercial risk. Plus we include professional communications training throughout to bring your report writing and presentation skills to industry standard.

As one of the fastest up and coming universities, we're able to offer you not only excellent teaching, course materials and facilities but support in finding accommodation. Rooms in University halls are specifically set aside. Fees for academic year 08/09 will be £68 per week plus £65 booking fee for a private room with shared kitchen.

You have the opportunity to take your education further by studying whilst in work. We offer you the chance, on successful completion of the initial 12-week postgraduate certificate stage, to go on to a postgraduate diploma and an independent project leading to your MSc. We offer you the flexibility of studying these either whilst you work or with us here at Derby.

## Your career

We prepare you for entry level jobs in the petroleum industry. Your first position could be in a service company supporting the oil industry in areas such as basic reservoir analysis, mudlogging, data management, data gathering and analysis.

Once you have gained this valuable experience and undertake the further study we offer, you are in a position to take advantage of all that the industry has to offer which includes challenging projects, international travel and good salaries.



## What you will cover

### The structure of the course

#### Stage one

##### Postgraduate Certificate (60 credits)

On site at Derby for 12 weeks you will cover:

- Petroleum geology: exploration, reservoirs
- Petroleum techniques: wellsite geology and basic petrophysics
- Geological and commercial risk: reserves, appraisal to production, HSE
- Professional communication skills: writing, speaking, information management

#### Stage two

##### Postgraduate Diploma (60 credits)

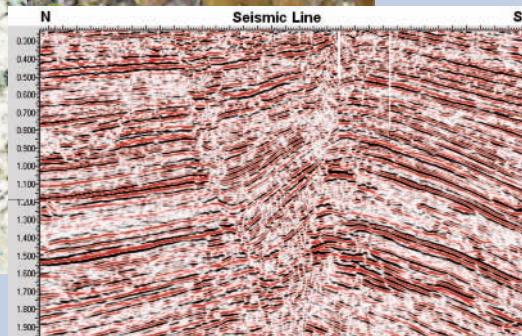
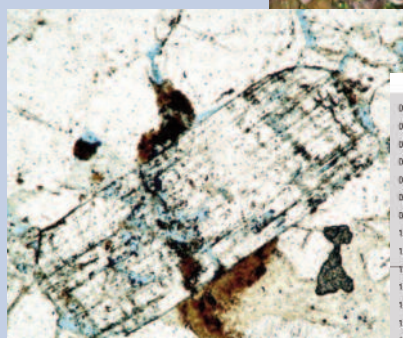
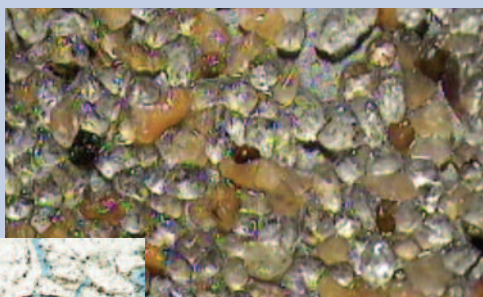
While employed in the oil industry you will study online but be on site at Derby for a workshop, fieldwork and assessments in January and June. We can offer you the flexibility to study over one or two years depending on work demands. You will study

- Operations geology: pressure, core point, QC, well planning
- Advanced petroleum geology: reservoir character, reservoir modelling, field work
- Subsurface geology: formation evaluation, seismic exploration
- Basin analysis: types, analytical techniques, seismic interpretation, field evaluation, economic implications

#### Stage three

##### Independent project leading to an MSc

- You can study on site at Derby full time for four months or part time in your place of work over a year
- The type of project you undertake is negotiable but its focus should be well, seismic or basin modelling. You will also complete a formal written report and oral presentation.



## Get in touch

Dr. Dorothy Satterfield, Programme Leader  
 e: [apg@derby.ac.uk](mailto:apg@derby.ac.uk)  
 t: 01332 591703  
 w: [www.derby.ac.uk/gees](http://www.derby.ac.uk/gees)



UNIVERSITY  
of DERBY

Faculty of Education, Health and Sciences